

User Manual

Please read this instruction carefully before using the product.

Electric Vehicle Charging Cables (Mode 3)

Thank you for choosing our EV Charging cable. In order to help you use this product properly, please read this User Manual carefully before using the product.

CAUTION

Do not use this product on rainy days.

Make sure chargers are used in a safe, secure place and well out of the reach of young children or pets.

Do not damage the products maliciously

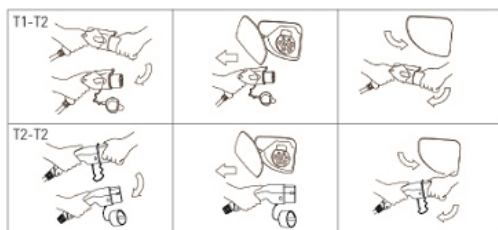
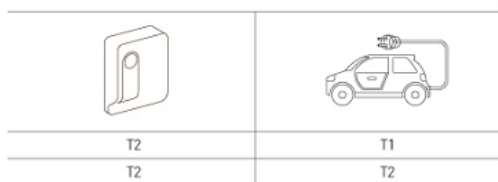
Do not drop the connector or press heavy objects on its surface.

Do not disassemble or assemble the connector and change the internal parts

Do not clean the products using chemicals.

Do not charge while driving.

Please follow these instructions to avoid the risk of death or serious injury.



Please make sure the connector is fully inserted into the socket.

Portable Charger for Electric Vehicles (Mode 2)

Portable Charger for Electric Vehicles

CAUTION

Do not expose the control box to rain.

Do not immerse the charger in water.

Do not damage the products maliciously

Avoid dropping the communications box or pressing heavy objects on its surface.

Keep the charger away from high temperature.

Do not place the charger in the car or in a confined space when charging.

The operating temperature of this equipment cannot exceed -30°C to $+50^{\circ}\text{C}$

WARNINGS

Use with RCD circuit breaker only.

Do not use this product if the EV charging cable is damaged.

For Electric vehicle charging only.

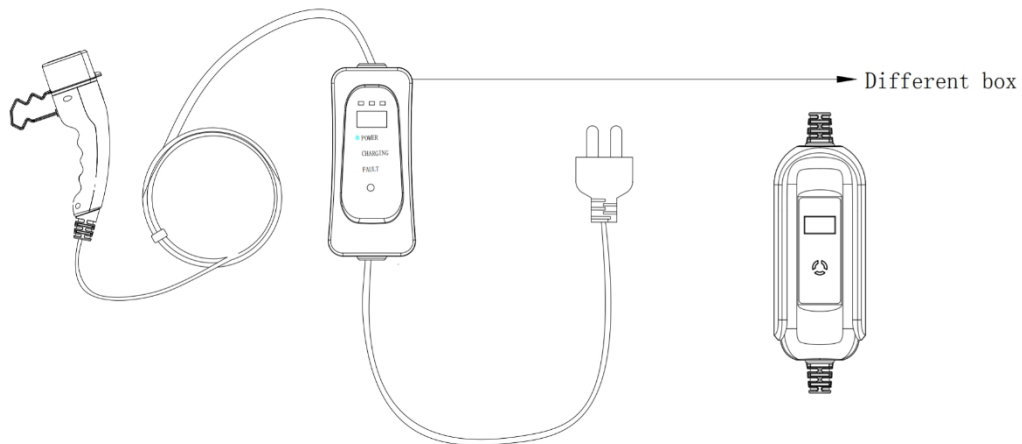
This product must be grounded properly when used.

Do not put fingers into the charging plug.

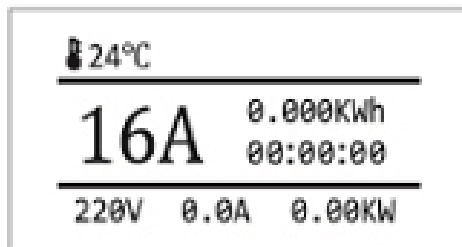
This product does not contain user-serviceable parts, please do not try to repair or maintain the product on your own.

If the charger cannot be charged normally according to the User Manual, please contact the dealer for repair or replacement.

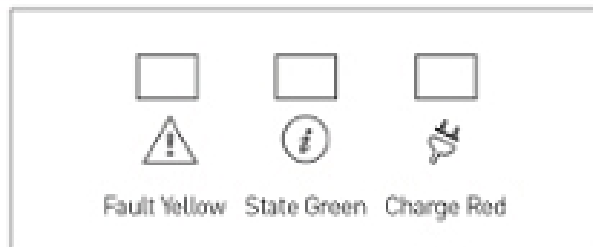
Product Descriptions



Communications Box (LED Screen)



Status LED Meaning



communications box (LED Screen)

Status LED Meaning:

	LED State	Fault Yellow	State Green	Charge Red
24°C : Temperature	Ready	Off	On	Off
16A : Rated Current	EV Connected	Off	Slow Flash	Off
0.000kwh:Electricity consumption	CP Error	Off	Fast Flash	Off
00:00:00 : Charging Time	Charging	Off	Pulsing	On
0.00kw : power	Charge Complete	Off	Flash	Off
0.0A : Constant current	Fault	Flash	Off	Off

Specifications

Standards	IEC 62196-2、SAE J1772
Rated Voltage	110/250V AC
Rated Current	8-10-13-16A(MAX) AC
Rated Frequency	50Hz/60Hz
Insulation Resistance	>10M Ω
Operating Temperature	-30°C to +50°C
Storage Temperature	-40°C to +80°C
Operating Humidity	5%~95%RH (non-condensing)
Enclosure	In-Cable box:IP54 Charging connector: IP54
Weight	2.5kg

Precautions

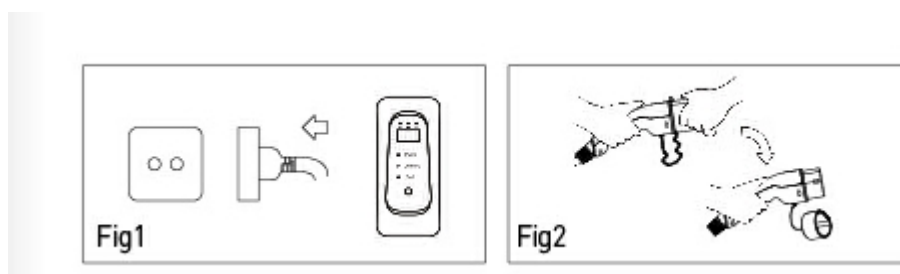
Make sure that the charger is free from any abnormal conditions, such as laceration, rust, rupture or breakage of charging ports, cables, control boxes, wires, and plug surfaces.

Please do not use this charger if the socket is damaged, rusted, cracked or loosely connected.

Do not start using if the plug is dirty or wet! Wipe with a clean and dry cloth to make sure it is dry and free of dirt.

Make sure that the plug at the power supply end is consistent with the power supply socket before charging.

How To Start charging



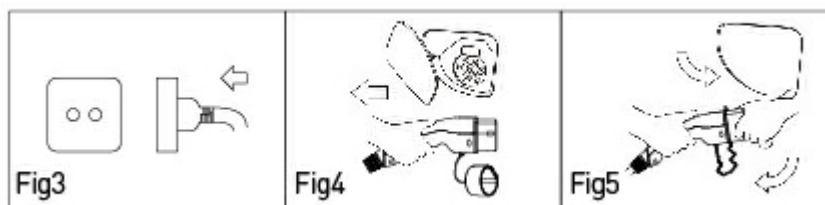
1. Take out the charging cable and insert the plug into the power supply socket (as shown in Fig1)
2. Push the blue button on the controller to adjust the current.

3. Please remove the protective cap and fully insert the charging connector into the charging port.
(as shown in Fig2)

Make sure the connector is fully inserted into the socket.

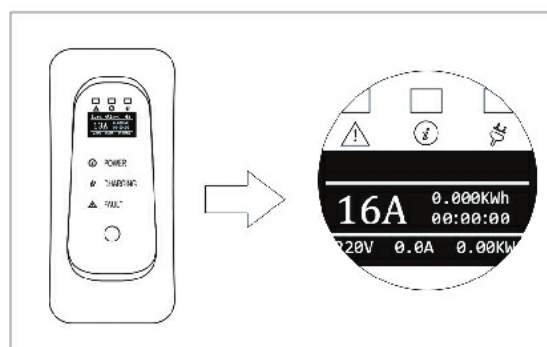
4.If the charging device operates automatically, the red light will always be on, and the green light will be flashing.

How To Stop Charging



1. Disconnect the plug from the outlet socket (as shown in Fig.3)
2. Disconnect the charging connector from the vehicle inlet socket (as shown in Fig.4)
3. Close the protective shell of charging port at the car end, and then cover the protective cap of the charging connector. (as shown in Fig.5)
4. Put the charger into the bag.

Current (Amp) Switching of the Controller



In order to switch charging current, make sure the power plug is firmly inserted into the socket and the end of the EV vehicle is disconnected, and then press the blue switch button. The charging current will be successfully switched.